

GUIDE FOR STAFF/GUARDIANS

DIABETES

- **DIABETES IS A CHRONIC DISEASE THAT AFFECTS THOUSANDS OF SCHOOL - AGE CHILDREN NATIONWIDE**
 - Schools have an important role to play in ensuring that students with diabetes have the support they need to stay healthy, enjoy the same opportunities for learning and having fun as their peers, and are prepared to do their best in school.

HEALTH CARE & EDUCATION PLANS

- **DMMP: DIABETES MEDICAL MANAGEMENT PLAN**
 - completed by the students school health team. This contains the medical orders (sent by child's doctor) that are the basis for the student's health care and education plans. The plan is reviewed and updated at the start of each school year.
- **IHP: INDIVIDUALIZED HEALTH CARE PLAN**
 - prepared by child's doctor, the IHP contains the strategies for carrying out the medical orders in the DMMP in the school setting.
** optional- DMMP & 504 mostly cover this
- **IEP: INDIVIDUALIZED EDUCATION PROGRAM**
 - a plan required for students with disabilities who receive special education and related services under the IDEA. The plan, which is more specific than the Section 504 plan, addresses the student's progress in school and needs related to diabetes care.
- **SECTION 504 PLAN**
 - a plan of services developed under Section 504 of the Rehabilitation Act. The plan describes how the school will ensure that the student with diabetes has access to needed medical services, receives the same education as other students, and is treated fairly.
- **EMERGENCY CARE PLANS FOR HYPOGLYCEMIA & HYPERGLYCEMIA**
 - Based on the DMMP, the plans provide details about how to recognize and treat high and low blood sugars and whom to contact for help. The school nurse will coordinate the development of these plans.

FEDERAL LAWS RELATED TO HELPING STUDENTS WITH DIABETES

- **THREE LAWS THAT ADDRESS THE SCHOOL'S ROLE WITH STUDENTS & DIABETES**
 - Section 504 of the Rehabilitation Act of 1973
 - Americans with Disabilities Act of 1990
 - Individuals with Disabilities Education Act (IDEA)

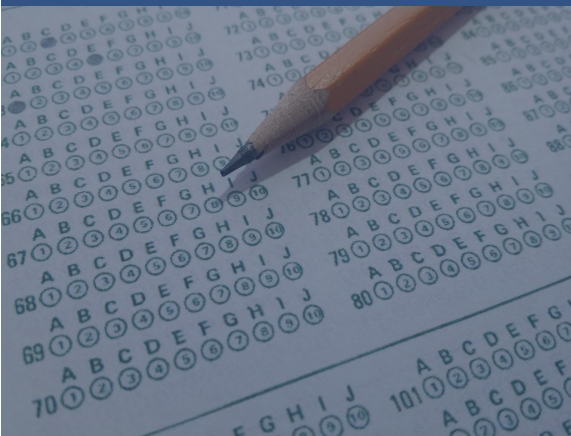
CHECK LIST:

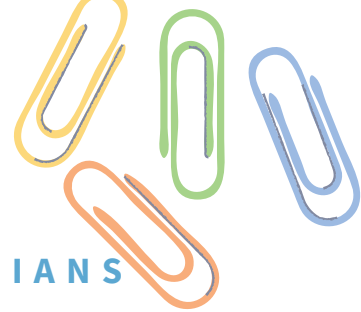
HEALTH CARE PLANS COMPLETED & MATCH:

- DMMP
- IHP
- IEP
- HYPOGLYCEMIA
- HYPERGLYCEMIA
- 504

KNOW THE FEDERAL LAWS:

- SECTION 504
- ADA
- IDEA





CHECK LIST:

SCHOOL HEALTH TEAM:

- PARENT/GUARDIAN
- SCHOOL NURSE
- DIRECT TEACHERS
- PRINCIPAL/ADMIN.
- COACHES

REMINDE SCHOOL DISTRICT
IN JANUARY TO MAKE SURE
ALL HEALTH PLANS MATCH
BEFORE STATE TESTING
TIME.

SWEET SUBJECT BOX:

- MAKE SURE YOUR SCHOOL HAS A SWEET SUBJECT BOX
- CHECK WITH SCHOOL TO MAKE SURE IT IS FULL BEFORE STATE TESTING

PREPARE PROCTORS

- DEVICE OPTIONS

GUIDE FOR STAFF/GUARDIANS

SCHOOL HEALTH TEAM

• ABOUT

- the school health team ensures that students with diabetes receive all the help they need while in the school setting. They are a part of the group that develops and implements the student's education plan. The information in the education plan should be agreed on before each school year begins or when a student is diagnosed with diabetes, then should be signed by a representative of the school and the student's parents or guardians

• WHO

- parents/guardians
- school nurse
- direct teachers
- principal/admin.
- coaches

HEALTH CARE & EDUCATION PLANS

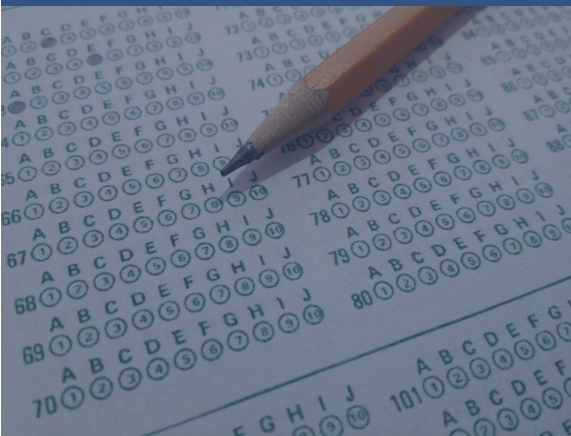
- **MANAGEMENT-** students with diabetes must check their glucose levels by using one or both of these devices:
 - Glucometer: uses a small drop of blood from a finger to measure blood sugar levels
 - CGM (continuous glucose monitor): a device that works through a tiny sensor inserted under the skin, which can test blood glucose every few minutes.
- Which device is used, should be specified in the student's health care plans
 - make sure all health care plans information match up before state testing time (get school district to double check in January)

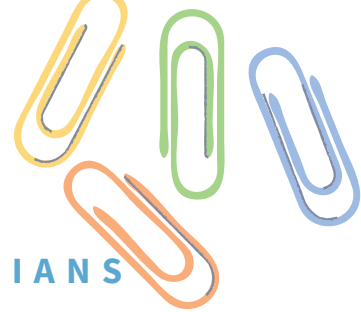
SWEET SUBJECT BOX

- **PROVIDED BY THE DIABETES FOUNDATION OF MISSISSIPPI**
 - this is an emergency diabetes supplies box sent to schools to keep on hand that have students with diabetes, it includes:
 - glucometer, testing strips, ketone strips, lancets, sharps containers, low blood sugar treatment, high blood sugar treatment, information for staff

STATE TESTING PROCTORS

- **TALK WITH SCHOOL DISTRICT ON DEVICE OPTIONS & HEALTH CARE PLANS**
 - pump/cgm devices: HAVE A PLAN in place for where or who the phone/device will be with
 - example- Does the school nurse follow child's dexcom
 - example- phone/device on silent in testing room, on the teachers desk
 - example- phone/device on proctor in hallway
 - Proctors **MUST** respond to and know what alarms mean on these devices.





GUIDE FOR STAFF/GUARDIANS

CHECK LIST:

PREPARE PROCTORS

- TESTING LOCATION
- BLOOD SUGAR TREATMENT

PRIVATE SCHOOLS

- ARE THE PROTOCOLS THE SAME?

STATE TESTING PROCTORS CONTINUED

- TESTING LOCATION
 - through health plans- decide whether the child needs to be in a separate room for testing
 - through health plans - decide whether the child needs extra testing time (in case of a diabetes interruption of blood sugar being out of range)
- HIGH/LOW BLOOD SUGAR TREATMENT
 - through health plans- decide what and where low and high blood sugar treatment options need to be (with proctor- in class, on desk, outside of the room)

PRIVATE SCHOOLS

- Should have the same or similar accommodations for students with diabetes as public schools.

INFORMATION PROVIDED BY

- Mississippi school nurses
- Parents of kids with diabetes
- DFM Staff
- www.niddk.nih.gov/health-information/professionals/clinical-tools-patient-management/diabetes/helping-student-diabetes-succeed-guide-school-personnel?dkrd=hispt1099

FOR MORE INFORMATION

- Contact the Diabetes Foundation of Mississippi
 - 601-957-7878
- Call your local school district office
- Talk to your doctor



msdiabetes.org



Diabetes Foundation of Mississippi



@msdiabetes

